



Ingham County

## 4-H Family News

March 26, 2021



## 4-H GROWS HERE

## JOANN &amp; 4-H Create Opportunity 4 All:

**March 1 – April 30, 2021** will be the JOANN point of sale (POS) campaign both in-stores and online. During this period, customers can purchase a \$1 or \$4 clover to support 4-H at checkout in-stores and online. Learn more at: <https://4-h.org/joann>.

We did have one major date change. The take home activity that was scheduled for April 18 has been **shifted to Saturday, April 3<sup>rd</sup>**. It's totally free, kids walk into JOANNs and can pick up a bag of supplies. They do include a coupon in case they want to buy additional supplies since the craft is aimed at being a starter project. There is also a promo for 4-H included in the craft bag stuffer.

- @JOANN & @4-H are creating #Opportunity4All kids to create, make and learn through hands-on experiences. JOANN customers can help inspire a child's creativity by donating \$1 or \$4 at checkout in stores or online now through April 30. Learn more: <http://bit.ly/3iAa7td> #JOANNLOVES4H
- Help @4-H inspire a child's creativity! Now through April 30, donate \$1 or \$4 when you visit @JOANN in-store or online. Learn more: <http://bit.ly/3iAa7td> #JOANNLOVES4H #Opportunity4All
- @JOANN is helping @4-H bring more hands-on programs to local communities across the nation to create #Opportunity4All kids to be inspired through creativity. Now through April 30, you can support 4-H at JOANNs in-store or online. Learn more: <http://bit.ly/3iAa7td> #JOANNLOVES4H
- Do you have a @JOANN Rewards Card? Sign up for free! It's a great way to shop with purpose while supporting @4-H! <http://bit.ly/3iAa7td> #JOANNLOVES4H #Opportunity4All



Michigan State University is an affirmative action/equal opportunity employer. Michigan State University Extension programs and materials are open to all without regard to race, color, national origin, gender, gender identity, religion, age, height, weight, disability, political beliefs, sexual orientation, marital status, family status or veteran status. Issued in furtherance of MSU Extension work, acts of May 8 and June 30, 1914, in cooperation with the U.S. Department of Agriculture. Jeffrey W. Dwyer, Director, MSU Extension, East Lansing, MI 48824. This information is for educational purposes only. Reference to commercial products or trade names does not imply endorsement by MSU Extension or bias against those not mentioned. The 4-H Name and Emblem have special protections from Congress, protected by code 18 USC 707.

Ingham County 4H-  
MSU ExtensionFind us on:  
facebook®

Be sure to like and follow us for the latest 4-H information.

## Contact Us

Eric Dobbrastine  
4-H Program Coordinator  
[dobbras1@msu.edu](mailto:dobbras1@msu.edu)

Glenda Weiss  
4-H Program Coordinator  
[weissgle@msu.edu](mailto:weissgle@msu.edu)

Lori Guy  
Office Coordinator  
[lguy@ingham.org](mailto:lguy@ingham.org)

Michigan State University Extension  
4-H Youth Development  
Ingham County  
121 E. Maple Street  
PO Box 319  
Mason, MI 48854  
Ph: 517.676.7207 • Fax: 517.676.7288  
[msue.ingham@county.msu.edu](mailto:msue.ingham@county.msu.edu)

**Ingham County 4-H**  
<https://www.canr.msu.edu/ingham/4-h/>

**Facebook**  
<https://www.facebook.com/Ingham4H>



## Swine Project Submission Forms due May 1

Due to COVID19, exhibitors should complete the project submission forms located at <https://www.canr.msu.edu/ingham/4-h/animal-projects/swine>. Please submit the health form, ractopamine form, producer affidavit, and parent affidavit paperwork to the **Fair Office by May 1.**

If you have questions, please contact Superintendent Macayla Bogart at (517) 706-8178 or email [bogartm1@msu.edu](mailto:bogartm1@msu.edu).



## YQCA Certification Needed to Sell Livestock At Fair

All youth must be YQCA certified in order to **sell your swine, beef or dairy market steer/feeder projects at Fair.**

Youth for the Quality Care of Animals (YQCA) is a national multi-species quality assurance program for youth ages 8 to 21. YQCA is designed as an annual education and certification program focused on food safety, animal well-being and character awareness for youth producing and/or showing pigs, beef cattle, dairy cattle, sheep, goats, market rabbit, and poultry.

Complete your certification at <http://yqca.org/>. You will need to be prepared to pay for the cost of the YQCA training when you register with a credit/debit card. Register using your 4Honline account. Contact Glenda at 676-7303 with questions.



## 4-H Mark of Excellence

The "4-H Mark of Excellence Award" is a recognition opportunity designed for 11& 12-year-old 4-H members. Two essays will be selected as winners from each County across the state.

To participate, Write an essay or short story (500 words or less) that reflects on opportunities and experiences as 4-H member around the topic:

**"Because of  4-H, I can....."**

**All essays must be submitted to the county 4-H office by April 1.**  
Additional information about the award can be found online at:

[https://www.canr.msu.edu/4\\_h\\_scholarships\\_and\\_recognition\\_program/4-h-awards-and-recognition-program/youth-recognition](https://www.canr.msu.edu/4_h_scholarships_and_recognition_program/4-h-awards-and-recognition-program/youth-recognition)



## STATEWIDE NEWS AREA

3

### The Importance of Saving and Investing: 4-H Livestock Edition



Open to youth ages 15-19 (statewide)

April 5, 7:30 pm

*The end of a market livestock project is usually a check from the auction.*

*This 1-hour workshop will cover:*

The different types of saving goals: short, medium and long-term

The importance of planning ahead

Understanding Investment alternatives

Additional resources

Registration link: <https://events.anr.msu.edu/Investing2021/>



### Save the Date



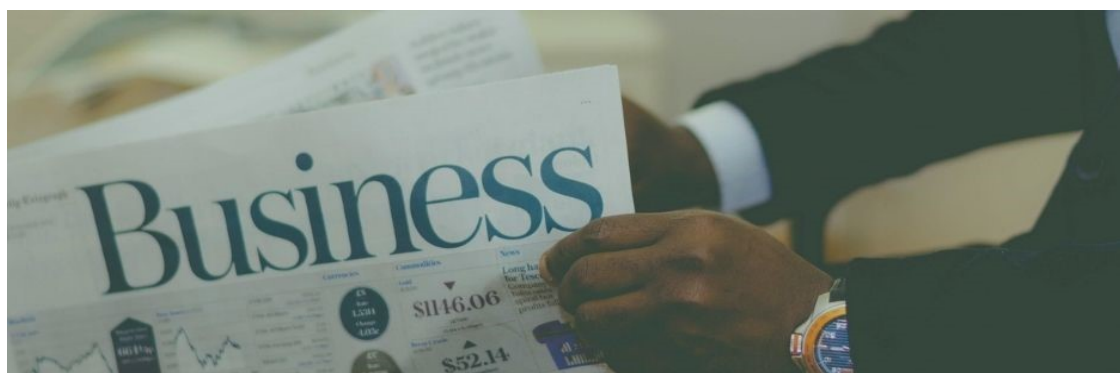
2021 MICHIGAN 4-H  
EXPLORATION DAYS: EXPANDED

June 22-24, 2021

Registration opens end of April.



MICHIGAN STATE  
UNIVERSITY | Extension



### 4-H Market Livestock Through a Business Lens

Open to youth ages 8-19.

April 20, 7:30 pm via zoom.

*This 1-hour workshop will cover:*

- How to get started
- Types of Organizations
- What makes a business concept?
- The cost of doing business
- Money Decisions and risk management
- Money management skills
- Credit and cash flow
- Business credit vs. personal credit



Registration link:

<https://events.anr.msu.edu/MoneySmart2021/>

The **\*\*all-new\*\*** Michigan 4-H Dog Program Walk Across Our State Challenge is open for registration! That's right, earn prizes while walking the dog!

Challenge begins April 15, 2021 and finishes May 31, 2021

Individual- \$5.00

Team- \$25.00 (\$5/team member)

**RULES & REGISTRATION FOUND HERE:** <https://events.anr.msu.edu/MI4HDogWalkAcrossOurState/>

Youth and adults may participate. Individual and team divisions. Michigan geography, history, and fun facts will then be shared with participants via email and social media weekly.

Top placing individuals and teams will be recognized and earn prizes. All participants receive a participation certificate!

# Walk Across the State!

**MICHIGAN 4-H DOG PROGRAM  
APRIL 15-MAY 31**



JOIN US ONLINE!

## 4-H LEGO MASTER BUILDER SPIN CLUB



<https://events.anr.msu.edu/4HLegoSPINClubApril/>

***Every day choose to be creative, be ingenious, be an engineer and become a Master Builder with LEGO! Open to all youth aged 5 to 12.***

Sign up by April 22nd!

Starts: Monday, April 26-30, 2021

From: 4-5:15pm

Questions: Christine Miller email at [johns832@msu.edu](mailto:johns832@msu.edu) or call (517)552-6905

**MICHIGAN STATE UNIVERSITY** | Extension



JOIN US ONLINE!

# 4-H IN THE KITCHEN LIVE: FORTUNE COOKIES

April 17, 2021  
2:00 pm


<https://events.anr.msu.edu/FortuneCookies/>

MICHIGAN STATE UNIVERSITY | Extension



AGES: 13-19 NO COST!

## MYSTERY AT THE ZOO




# VIRTUAL CLUE

JOIN AS AN INDIVIDUAL OR AS PART OF A TEAM

**Thur., April 8 – 7 pm EDT**

MICHIGAN STATE UNIVERSITY | Extension



MSU Extension programs and material are open to all without regard to race, color, national origin, gender, gender identity, religion, age, height, weight, disability, political beliefs, sexual orientation, marital status, family status, or veteran status.

### Virtual Clue 2

Notorious animal-thief Nikolai the Camel Guy is plotting to steal one of the zoo's animals! However, the letter to his accomplice with all the plan's details has been damaged. Which animal do they want to steal? Why? And which zoo employee is in on it? Gather two or three of your friends to team up and solve this crime before it's too late!

Register for this FREE event here: <https://events.anr.msu.edu/VC2Mystery/>

SHIAWASSEE COUNTY 4-H PRESENTS

# EARTH DAY HEROES

JOIN US IN THIS FREE VIRTUAL 6 SESSION SPIN CLUB DESIGNED TO MAKE EVERYONE AN EVERYDAY EARTH DAY HERO. EXPERIMENT AND CREATE IN WAYS TO HELP THE BETTER YOUR ENVIRONMENT. EVENT IS OPEN TO AGES 6 -12. 4-H AND NON 4-H MEMEBERS WELCOME.

**APRIL 20, 21, 22, 27, 28, 29**

**AT 5:00 PM**

UPON REGISTRATION A KIT WITH MOST OF THE SUPPIES WILL BE AVAILABLE. PARTICIPANTS WILL HAVE TO OBTAIN A FEW ITEMS ON THEIR OWN. KITS WILL BE AVAILABLE FOR LOCAL PICK UP OR MAILED IF NON LOCAL. PLEASE SEE REGISTRATION DEADLINE TO INSURE TIMELY DELIVERY.

**REGISTRATION DEADLINE IS APRIL 11, 2021**

ANY QUESTIONS PLEASE EMAIL MARTINA VALDEZ @ VALDEZM3@MSU.EDU



MICHIGAN STATE UNIVERSITY | Extension



<https://events.anr.msu.edu/4HDancePartySPINClub/>

JOIN US ONLINE!

## 4-H DANCE PARTY SPIN CLUB



*An introduction to computer coding by  
programming your own Dance Party!  
Open to all youth aged 8 to 14.*

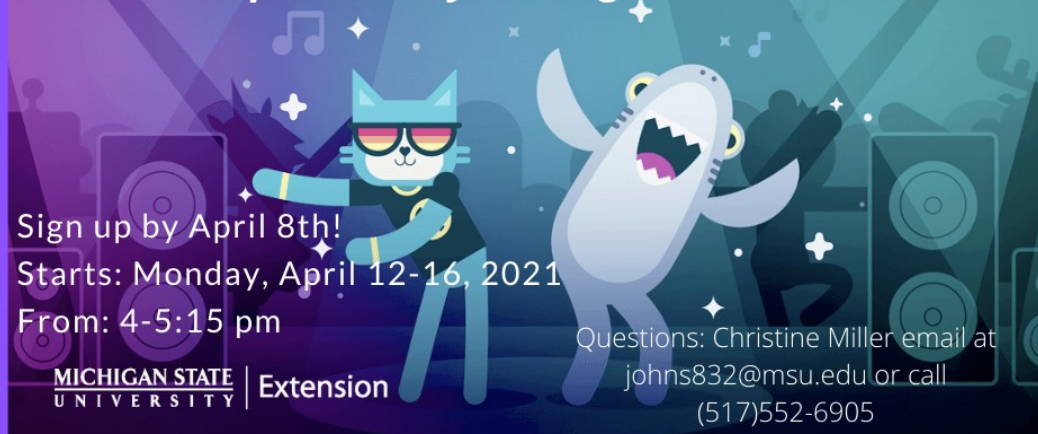
Sign up by April 8th!

Starts: Monday, April 12-16, 2021

From: 4-5:15 pm

MICHIGAN STATE UNIVERSITY | Extension

Questions: Christine Miller email at  
johns832@msu.edu or call  
(517)552-6905





# THEMED TRIVIA NIGHTS!

Virtual 4-H SPIN Club

Join us as we test your knowledge on topics like Disney Movies, Animals, Acronyms, Sports, and "Where in the World"! Special Prizes will be awarded to the winning team and individuals!

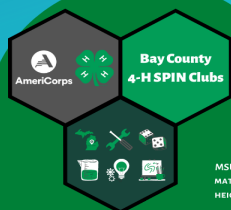
When: April 5, April 6, April 7, April 8, and April 9  
7 PM - 8 PM EST

We will be meeting online  
using the Zoom app

MUST REGISTER on 4-H Online  
TO GET ACCESS to club

Free and Open to youth ages 9 and Up

Please visit [bit.ly/Trivia4H](http://bit.ly/Trivia4H) to receive  
more information about this club and  
how to register on 4-H Online



For More Info:

f Bay County 4-H

@BayCounty4H

Lance Fowler  
[fowler37@msu.edu](mailto:fowler37@msu.edu)

MICHIGAN STATE  
UNIVERSITY

Extension

Supported by



MSU IS AN AFFIRMATIVE-ACTION, EQUAL-OPPORTUNITY EMPLOYER. MICHIGAN STATE UNIVERSITY EXTENSION PROGRAMS AND MATERIALS ARE OPEN TO ALL WITHOUT REGARD TO RACE, COLOR, NATIONAL ORIGIN, GENDER, GENDER IDENTITY, RELIGION, AGE, HEIGHT, WEIGHT, DISABILITY, POLITICAL BELIEFS, SEXUAL ORIENTATION, MARITAL STATUS, FAMILY STATUS OR VETERAN STATUS. PERSONS WITH DISABILITIES HAVE THE RIGHT TO REQUEST AND RECEIVE REASONABLE ACCOMMODATIONS.

# Backyard Bees

During this free statewide special interest club, learn about:

- Bee Anatomy
- Pollination
- Beekeeping
- Honey Flavors

Plus receive a hands on activity kit!



MICHIGAN STATE UNIVERSITY EXTENSION



This club will be held at 6:30pm on consecutive  
Thursdays, April 22, 29, May 6, 13, 20, 27.

To register for this program, contact  
Kaelie Fessler at 989-734-2168 or [fessler5@msu.edu](mailto:fessler5@msu.edu)



4-H GROWS HERE

MICHIGAN STATE  
UNIVERSITY

Extension

## Financial Reality Fair

April 28

4:00 to 5:30 pm

Join us for a real life simulation activity that will challenge teens to see if they can live within their means on an income of someone just started out in their career. This interactive financial program is open to high school students or young adults living at home. Throughout the program, there will be many temptations for additional spending, and students must learn to balance their wants and needs to live on their own. Participants will gain budgeting skills as they pay for their housing, utilities, transportation, clothing, food, entertainment and more.

Registration is open to the first sixty youth: <https://www.canr.msu.edu/events/reality-fair>

Financial  
Reality  
Fair!

HOSTED BY:

GENISYS

IMCUE

4-H



MSU is an affirmative action, equal opportunity employer. Michigan State University Extension programs and materials are open to all without regard to race, color, religion, sex, age, disability, sexual orientation, marital status, family status or veteran status. Persons with disabilities have the right to request and receive reasonable accommodations.

## Keeping Kids Safe

We would like to take a moment and share new resources that have been developed by the SAFE team for parents and volunteers.

[Keeping Kids Safe: Preventing Grooming by Child Sexual Predators](#)

[Keeping Kids Safe: How Child Sexual Predators Groom Adults, Families, and Communities](#)

[Keeping Kids Safe: How Child Sexual Predators Groom Children](#)

I would also like to take a quick moment to remind you of the other resources that are also available.

[Keeping Kids Safe: Ages 12-17](#)

[Keeping Kids Safe: Ages 6-11](#)

[Keeping Kids Safe: Ages 0-5](#)

[Keeping Kids SAFE: The downside to "sharenting" on social media](#)

[Keeping Kids Safe Virtually: Best Practices](#)



# Are Your Laces Tied? 4-H Hiking SPIN Club

Tuesdays from April 27 until May 25  
5:30-6:30 EST / 4:30-5:30 CT

[HTTPS://EVENTS.ANR.MSU.EDU/AREYOURLACESTIED/](https://events.anr.msu.edu/areyourlacestied/)

SAFE SPACE

MICHIGAN STATE UNIVERSITY Extension

JOIN US ONLINE!

## 4-H CODING WEEKEND WORKSHOP



This is an introductory coding workshop for High School aged youth. The workshop is held over two weekends- participants must attend all 4 days. Participants will need to have the ability to do video conferencing.

Sat. & Sun.: April 10 & 11 and May 22 & 23

From 9am to 3pm

<https://events.anr.msu.edu/4HCodingWeekendWorkshop/>

Cost: \$150.00

Registration Deadline April 7th



Questions: Christine Miller email at  
johns832@msu.edu or call  
(517)552-6905

MICHIGAN STATE UNIVERSITY | Extension



**JOIN US ONLINE**

## **FOOD SAFETY ONLINE WORKSHOPS WEEK OF MARCH 29**

***Food Safety Q&A***

***Monday, Mar. 29th- 1 p.m. EDT***

***Michigan Cottage Food Law Training***

***Tuesday, Mar. 30th- 3 p.m. EDT***

***Investigating Food with Science***

***Wednesday, Mar. 31st- 4 p.m. EDT***

***Spring Home Food Preservation***

***Thursday, Apr. 1st- 1 p.m. & 6 p.m. EDT***

**HTTPS://WWW.CANR.MSU.EDU/SAFE\_FOOD\_WATER/EVENTS  
TO JOIN BY PHONE, CALL IN ADVANCE TO REGISTER AT 877-643-9882.**

**MICHIGAN STATE  
UNIVERSITY | Extension**

9

***April is Month of the  
Military Child!***



Join Michigan 4-H in celebrating military families and children during the Month of the Military Child by taking part in the 4-H GooseChase Challenge this April! Whether you come from a military family or not, this online scavenger hunt will be a fun and exciting way to honor military kids across Michigan.

New missions will be released weekly in April, for a chance to win prizes. Any youth ages 13-19 can download the GooseChase app to participate. Youth younger than 13 can partner with an older sibling or parent/guardian to play.

For more information and to register visit [www.canr.msu.edu/events/momcgoose](https://www.canr.msu.edu/events/momcgoose).

**MONTH OF THE  
MILITARY CHILD**



**Join Michigan 4-H for a state wide challenge using the  
GooseChase App in celebration for month of the military  
child!**

**Challenges will be released weekly for a chance to win  
awards and connect with others in state.**

**Open to all youth, in a military family or not April 1st-30th.**

**MICHIGAN STATE  
UNIVERSITY | Extension**



10

The **\*\*all-new\*\*** Michigan 4-H Ride Across Our State Challenge is now open for registration!

Challenge begins April 15, 2021 and finishes May 31, 2021

Individual- \$5.00

Team- \$25.00 (\$5/team member)

REGISTER HERE: <https://events.anr.msu.edu/RideAcrossOurState/>

CONTEST RULES FOUND HERE: [https://www.canr.msu.edu/horses\\_ponies/registration-information](https://www.canr.msu.edu/horses_ponies/registration-information)

Youth and adults may participate. Individual and team divisions. Michigan geography, history, and fun facts will then be shared with participants via email and social media weekly.

Top placing individuals and teams will be recognized. All participants receive a participation certificate!



## Junior & Senior Individual Divisions

### Awards:

- The top 5 individuals in each category, in each division, will receive ribbons; high scoring individuals will receive a plaque.
- The top 10 individuals overall in each division will receive ribbons; 1st and 2nd high individuals will receive a plaque.

The contest will open on April 1, 2021, at 9:00 AM (EST) and will close on April 3, 2021, at 9:00 PM (EST).

To view additional rules and the registration link (deadline March 25), scan the QR code or visit: <https://golinks.ncsu.edu/links/2021-hippology-invitational>



The 2021 Invitational Virtual Hippology Contest is open to all youth ages 8-18 that are non-North Carolina residents and/or NC 4-H members.

Participants may register here:

<https://events.anr.msu.edu/virtualhorsejudgingandhippology/>

Full contest rules can be found here:

[https://www.canr.msu.edu/horses\\_ponies/registration-information](https://www.canr.msu.edu/horses_ponies/registration-information)

## REGISTRATION IS NOW OPEN!



### MI 4-H HORSE PROGRAM'S HORSE JUDGING & HIPPOLOGY CONTESTS

*virtual*

April 10-11, 2021

Registration deadline: April 1

MICHIGAN STATE  
UNIVERSITY

Extension



**4-H GROWS HERE**



JOIN US ONLINE!

# ALTERNATIVE SPRING BREAK! 4-H IN THE KITCHEN LIVE! BAKED MOZZARELLA STICKS

March 30, 2021, 2:00 pm

<https://events.anr.msu.edu/BakedMozzSticks/>

MICHIGAN STATE  
UNIVERSITY | Extension



## *Kami Ori Creators Origami Instruction Series*

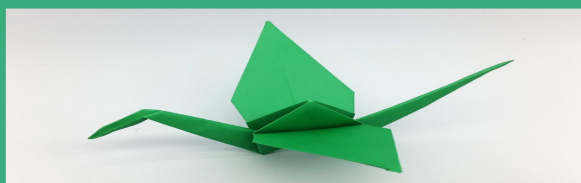
Join us live on zoom to explore the art and culture of Origami! This free program is for ages 9-19

Live meetings on April 5, 7, 12, 14, 19, 21  
4:30-5:30 PM

Register on Zoom at <http://bit.ly/kamiori>

New patterns every session!

<https://www.canr.msu.edu/events/4-h-kami-ori-origami-series>



MICHIGAN STATE  
UNIVERSITY | Extension

Michigan State University Extension programs and materials are open to all without regard to race, color, national origin, gender, gender identity, religion, age, height, weight, disability, political beliefs, sexual orientation, marital status, family status or veteran status.

# Spring Break Money Management SPIN Club

Tuesday, March 30 until Thursday, April 1  
1-2:30 p.m. EST

[HTTPS://WWW.CANR.MSU.EDU/EVENTS/SPRING-BREAK-MONEY](https://www.canr.msu.edu/events/spring-break-money)



MICHIGAN STATE  
UNIVERSITY Extension

## AVOIDING MONEY MISHAPS



APRIL 1ST: 4-5PM  
APRIL 5TH: 1-2PM  
APRIL 13TH: 5-6PM  
APRIL 21ST: 6-7PM  
APRIL 29TH: 3:30-4:30PM

THIS FREE  
WEBINAR FOR  
YOUTH WILL  
COVER COMMON  
FINANCIAL  
PITFALLS.

<https://www.canr.msu.edu/4-h-money-smarts/show-your-money-smarts-contest>

MICHIGAN STATE  
UNIVERSITY

Extension





VIRTUAL 4-H SPIN CLUB

# SPOKEN WORD POETRY

JOIN US AS WE TURN YOUR STORIES  
INTO SPOKEN WORD POEMS!

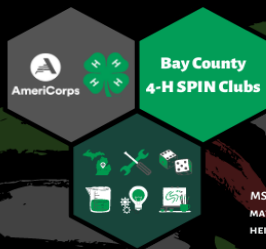
WHEN: APRIL 16, APRIL 23, APRIL 30,  
MAY 7, MAY 14, AND MAY 21  
4 PM - 5 PM EST

WE WILL BE MEETING ONLINE USING THE ZOOM APP

MUST REGISTER ON 4-H ONLINE TO GET ACCESS TO CLUB

FREE AND OPEN TO YOUTH AGES 9 AND UP

PLEASE VISIT [BIT.LY/POETRY4H](https://bit.ly/poetry4h) TO RECEIVE MORE  
INFORMATION ABOUT THIS CLUB AND HOW TO REGISTER ON 4-H ONLINE



For More Info:

Bay County 4-H  
 @BayCounty4H

Lance Fowler  
[fowler37@msu.edu](mailto:fowler37@msu.edu)

**MICHIGAN STATE UNIVERSITY** | Extension

Supported by



MSU IS AN AFFIRMATIVE-ACTION, EQUAL-OPPORTUNITY EMPLOYER. MICHIGAN STATE UNIVERSITY EXTENSION PROGRAMS AND MATERIALS ARE OPEN TO ALL WITHOUT REGARD TO RACE, COLOR, NATIONAL ORIGIN, GENDER, GENDER IDENTITY, RELIGION, AGE, HEIGHT, WEIGHT, DISABILITY, POLITICAL BELIEFS, SEXUAL ORIENTATION, MARITAL STATUS, FAMILY STATUS OR VETERAN STATUS. PERSONS WITH DISABILITIES HAVE THE RIGHT TO REQUEST AND RECEIVE REASONABLE ACCOMMODATIONS.



# JEDI TRAINING

WITH LUCE AND MACKINAC COUNTY 4-H

ARE YOU THE JEDI WE ARE LOOKING FOR?

Explore the skills of the Jedi through mindfulness,  
physical activities and at home challenges.

EVERY MONDAY  
APRIL 12TH - MAY 10TH

5:30 - 6:30PM

OPEN TO YOUTH AGES 7 AND UP  
TO REGISTER VISIT:

[HTTPS://FORMS.GLE/FAKJTVVCQUQ8GEB7Q7](https://forms.gle/FAKJTVVCQUQ8GEB7Q7)

For more information, please email:

Jessica Price at [brown130@msu.edu](mailto:brown130@msu.edu) or Susan Kirkman [kirkmans@msu.edu](mailto:kirkmans@msu.edu)

**MICHIGAN STATE UNIVERSITY** | Extension

✿ 4-H GROWS HERE

MSU is an affirmative-action, equal-opportunity employer, committed to achieving excellence through a diverse workforce and inclusive culture that encourages all people to reach their full potential. Michigan State University Extension programs and materials are open to all without regard to race, color, national origin, gender, gender identity, religion, age, height, weight, disability, political beliefs, sexual orientation, marital status, family status or veteran status.

JOIN US ONLINE!

# 4-H IN THE KITCHEN LIVE: FORTUNE COOKIES

April 17, 2021

2:00 pm

<https://events.anr.msu.edu/FortuneCookies/>

MICHIGAN STATE  
UNIVERSITY | Extension



JOIN US ONLINE!

# 4-H POETRY PACK

April 24, 2021

2:00 pm to 4:00 pm

<https://events.anr.msu.edu/PoetryPack/>

MICHIGAN STATE  
UNIVERSITY | Extension





## SCHOLARSHIPS

15

### Michigan Youth Livestock Scholarship Fund

**Entries due May 15, 2021**

#### Two Scholarship Options for 2021

- 1) MYLSF SCHOLARSHIP (UP TO \$5,000)
- 2) STATE-WIDE SCHOLARSHIP (UP TO \$1,000)

*Both Scholarships are funded by proceeds from the Michigan State Fair Youth Livestock Auction and the Michigan Livestock Expo Auction*

Since 2000, the Michigan Youth Livestock Scholarship Fund has been awarding scholarships annually to outstanding youth who exhibit at the Michigan State Fair, Michigan Livestock Expo and Michigan Dairy Expo. The fund is also responsible for supporting educational awards provided to youth livestock and dairy exhibitors each year.

Applications and qualification requirements for the MYLSF and the statewide scholarship can be obtained at [https://www.michigan.gov/mdard/0,4610,7-125-48096\\_49214\\_100474---,00.html](https://www.michigan.gov/mdard/0,4610,7-125-48096_49214_100474---,00.html)

Applications must be postmarked no later than **May 15, 2021**. If you have any questions, please contact Jeff Haarer, Michigan Department of Agriculture and Rural, at 517-284-5642 or Ernie Birchmeier, Michigan Farm Bureau, at 517-679-5335.

## MI Ag Ideas to Grow With College Scholarship Opportunity



Due to the generous support of individuals and organizational partners who supported the MI Ag Ideas to Grow With virtual conference, we are pleased to offer the 2021 MI Ag Ideas to Grow With college scholarship.

Seniors who are finishing their final year of high school (2020/2021) or students who have already started their post-secondary education at a college or university are encouraged to apply.

Apply  
by  
April 21

<http://bit.ly/MiAgIdeasScholarship>

**MICHIGAN STATE**  
UNIVERSITY | Extension

# STATEWIDE CALENDAR OF EVENTS

16

## Support 4-H at JOANNs



JOANN 

JOANN Fabrics and 4-H are teaming up to create #Opportunity4All kids to create, make and learn through hands-on experiences. You can help inspire a child's creativity by donating \$1 or \$4 at checkout when you visit JOANN in-store or online through April 30. Learn more: <http://bit.ly/3iAa7td>.

During this time frame, there may also be special discounts for JOANN 4-H Rewards Card members. If you have not yet obtained yours, sign-up today for your JOANN 4-H Rewards Card. Eligibility is open to the broad 4-H community (parents, volunteers, staff, alumni). The rewards card offers 15% off every purchase and JOANN will donate 2.5% of sales from the JOANN 4-H Rewards Card and \$0.50 for every yard purchased of custom 4-H fabric back to National 4-H Council. Learn more at [www.joann.com/4-h/](http://www.joann.com/4-h/).

## 4-H Events and Workshops

### April 5—21: 4-H Kami Ori Origami Series

#### Zoom Webinar

Join each Monday and Wednesday for three weeks to explore the art and culture of origami. Each meeting will complete a new origami project.

<https://www.canr.msu.edu/events/4-h-kami-ori-origami-series>

### April 10-11: 4-H Coding Weekend Workshop—An Intro to Coding

#### Zoom Webinar

Discover your passion for technology and gain valuable coding experience and skills. Part 1 of this two weekend workshop will help youth in grades 9-12 discover their passion for technology. The second part of the workshop will be held May 22 and 23.

<https://www.canr.msu.edu/events/4-h-coding-weekend-workshop>

### April 12 - 16: 4-H Dance Party SPIN Club

#### Zoom Webinar

Join the 4-H Dance Party SPIN Club! Explore computer coding by programming your own dance party! This is an introduction to computer coding. Participants will need internet access .

<https://www.canr.msu.edu/events/4-h-dance-party-spin-club>

### April 13: Wild Spartans Series - Researching Wildfire

#### Zoom Webinar

Delve into the cutting edge world of wildfire research to discover the role technology plays in studying the impacts to flora and fauna of boreal and arctic regions. Hear from a wildfire scientist about researching the behavior and impacts of wildfire in remote areas.

<https://www.canr.msu.edu/events/wild-spartans-series-april>

### April 14: Inked—The Science and Global History of Tattoos SPIN Club

#### Zoom Webinar

This six-week virtual SPIN club will meet Wednesdays through May 19 as they research different aspects of tattoos, cultures and art. Youth will engage in at-home hands on science experiments and design their own tattoo.

<https://www.canr.msu.edu/events/inked-the-science-and-global-history-of-tattoos>

### April 23: MSU Tollgate Farm Virtual Sustainable Stewards Series

#### Zoom Webinar

Explore how you can be a sustainability steward with your peers and community partners. Hear from teen leaders and Friends of the Rouge staff and volunteers as they explore issues facing their local watershed and the work of restoring, protecting and enhancing the Rouge River Watershed.

<https://www.canr.msu.edu/events/msu-tollgate-farm-virtual-sustainable-stewards-series-april-23>

### April 28-May 10: Spring TSC Paper Clover Campaign

#### Your local Tractor Supply

Support 4-H youth from April 28-May 10 by purchasing a paper clover both online or in Tractor Supply Co. (TSC) stores for just \$1!

<https://www.canr.msu.edu/events/spring-tractor-supply-co-paper-clover-campaign>

For the most up-to-date events listing, go to <http://4h.msue.msu.edu/events>.